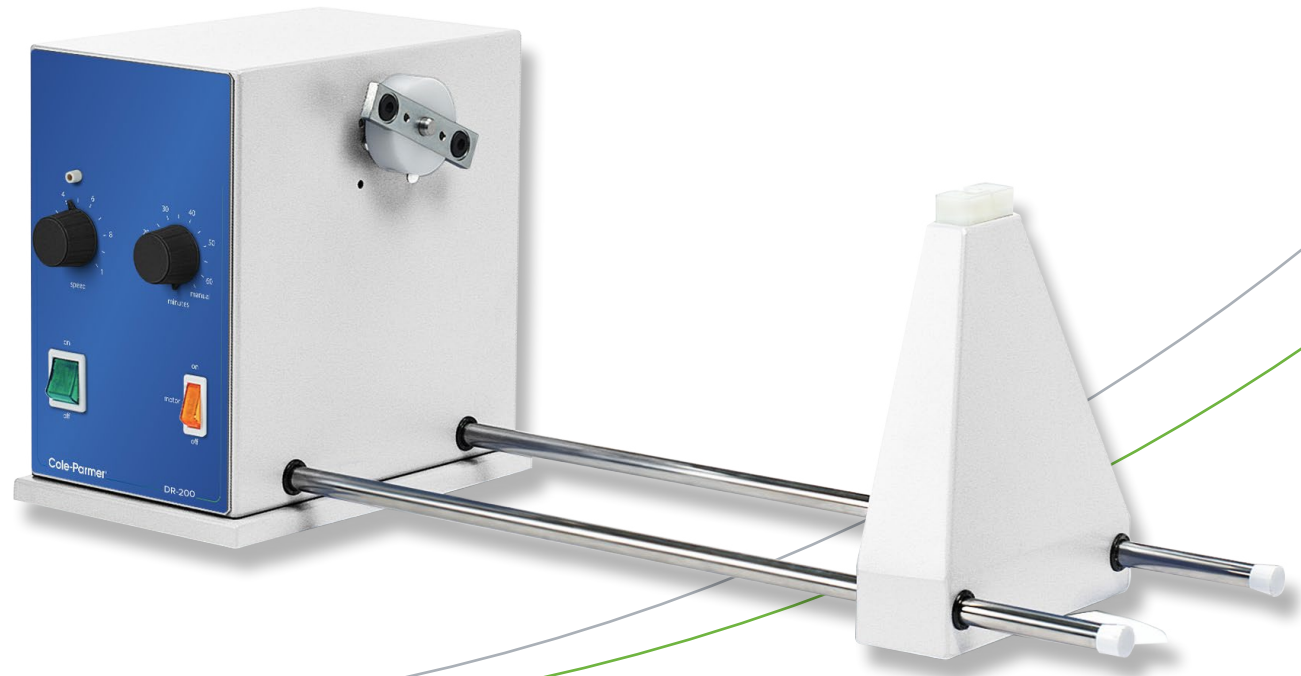


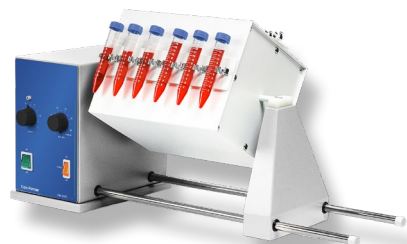
# Cole-Parmer®

## Cole-Parmer® Rotator drive units DR-200

- Highly versatile - accepts a choice of 5 drums
- Built in timer
- Variable speed control 6 to 60rpm



## Cole-Parmer® Rotator drive units, DR-200



51600-92

The rotator drive unit is used in conjunction with a wide range of drums designed to take different sizes and types of vessels. The five drums are designed to give different mixing actions.

Speed of rotation is variable from 6 to 60rpm for a range of mixing applications. For added convenience a built in analogue timer can be set from 10 to 60 minutes. Alternatively the unit can be set for continuous operation.

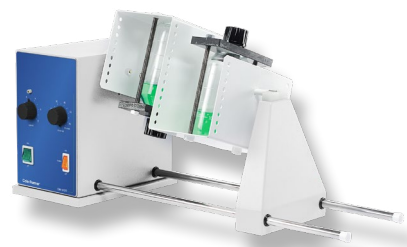
Test-tube holder, designed to rotate test-tubes in an end-over-end movement. Comprises a square metal drum which can accommodate a choice of plates fitted with tube clips. Up to four plates can be mounted on the drum. Easy fitting via a push button mechanism.

Two platforms, this drum accepts 2 x 250ml conical flasks or reagent bottles for end over end mixing. The samples are securely held in place by a collar that fits around the neck of the flask or bottle and is secured by two washers.

Drum holds the vessel at a 45° angle so it is rolled and turned end over end at the same time giving a vigorous figure of 8 mixing action. The sample container is retained by a strong Velcro strap. Accepts almost any container including reagent bottles, powder jars and paint tins up to 200mm in length and 120mm diameter.

This drum consists of a four segment Perspex® cradle. Each segment is fitted with a fully adjustable Velcro® strap to hold bottles and other containers up to 120mm diameter and up to 300mm in length.

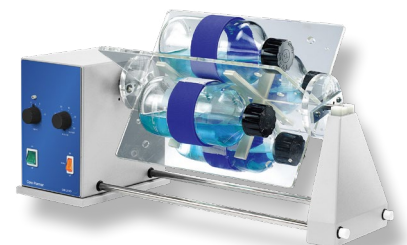
Designed to rotate test-tubes in an end-over-end movement. Comprises a square metal drum which can accommodate a choice of plates fitted with tube clips. Up to four plates can be mounted on the drum. Easy fitting via a push button mechanism.



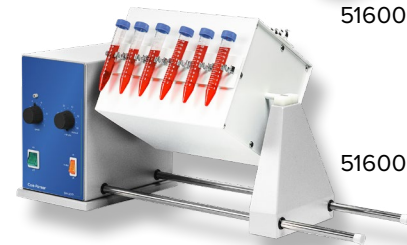
51600-96



51600-97



51600-98



51600-99

## Ordering Information

Description	Ordering Number	Series No.	Model No.	Legacy Sku.
Rotator drive, 230V, 50Hz	51600-06	DR-200	DR-200	STR4
Rotator drive, 120V, 60 Hz	51600-02	DR-200	DR-200-120	STR4/120V/60

## Accessories

Description	Ordering Number	Series No.	Model No.	Legacy Sku.
Drum to hold test tube clip plates	51600-95	DR-200	N/A	STR4/1
Clip plates for 12 x 12mm tubes (per pair)	51600-91	DR-200	N/A	STR1/1
2 Clip plates for 10 x 16mm tubes (per pair)	51600-92	DR-200	N/A	STR1/2
Clip plates for 8 x 19mm tubes (per pair)	51600-93	DR-200	N/A	STR1/3
Clip plates for 7 x 24mm tubes (per pair)	51600-94	DR-200	N/A	STR1/4
Drum with two platforms to hold flasks or bottles	51600-96	DR-200	N/A	STR4/2
Drum with figure 8 mixing action	51600-97	DR-200	N/A	STR4/3
Drum with four segment cradles holding up to four bottles	51600-98	DR-200	N/A	STR4/4
Drum with four segment cradles and four tube racks	51600-99	DR-200	N/A	STR4/5



## Technical Specification

Specification	DR-200
Maximum load, kg	3
Rotation speed	6 to 60rpm
Dimensions, mm (w x d x h)	650 x 250 x 250
Net weight, kg	6.4
Electrical Supply	230V, 50Hz, 50W 120V, 60Hz
IP Rating	31

coleparmer.com

USA:  
+1.800.323.4340  
+1.847.549.7600

Canada: +1.800.363.5900  
China: +86.21.5109.9909  
France: +33 (0) 1486 37800  
Germany: +49 (0) 9377 92030

India: +1.800.266.1244  
Italy: +39 (0) 1313 89513  
UK: +44 (0) 1480 272279  
All other countries: +1.847.549.7600

**Cole-Parmer®**  
essentials

an antylia scientific company

Find out more at antylia.com