

100% leak-free



Never have to repour another gel due to leaks—introducing the new SureCast Gel Handcast System

If you're frustrated having to repeat your experiments due to gel leakage*, switch to the new Invitrogen™ SureCast™ Gel Handcast System. The SureCast system is designed to minimise leakage during protein gel casting.



Benefits offered by the Invitrogen SureCast Gel Handcast System include:

- Leak-free design—gels that are more usable, less wasted time
- Superior glass plate durability—up to 20 times more durable compared to other suppliers**
- Unique tilt feature—minimise spillage when pouring acrylamide solutions
- Simple assembly of casting components using a single-motion, load-and-lock mechanism

The SureCast Gel Handcast System can be used to create polyacrylamide gels using Invitrogen™ SureCast™ Gel Handcast Reagents as well as other popular polyacrylamide gel casting reagents.

*Terms and conditions apply. For complete details, go to thermofisher.com/surecastterms

**Based on internal testing.

SureCast Gel Handcast Reagents

SureCast Stacking Buffer and Resolving Buffer

Invitrogen™ SureCast™ Stacking Buffer and Invitrogen™ SureCast™ Resolving Buffer are pouches of dry-blend powder, each sufficient to make 500 mL of stacking gel buffer (0.5 M Tris-HCl buffer, pH 6.8) or 500 mL of resolving gel buffer (1.5 M Tris buffer, pH 8.8) for handcasting polyacrylamide gels. Benefits include:

- **Convenient pouches of dry-blend powder**—dissolve contents of a single packet in water and the buffer is ready to use
- **Time- and space-saving**—no weighing, no calculations, no pH adjustment, and no need to stock individual components
- **Long shelf life**—stocking and storage as dry powder eliminates concerns about long-term stability of stock solutions

SureCast Acrylamide Solution, 40%

Invitrogen™ SureCast™ Acrylamide Solution can be used to prepare single-percentage and gradient gels using the Invitrogen™ SureCast™ Gel Handcast Station or other handcast systems.

Features include:

- Room-temperature storage
- Long shelf life
- High purity
- Safer alternative to powdered acrylamide
- Concentrated to enable a broader range of gel percentages to cast



See the SureCast Gel Handcast System
in action at thermofisher.com/surecast

Casting multiple gels because of leaks?



Pour-your-own gels with a 100% leak-free system*

Pour your own polyacrylamide mini gels easily and confidently with the **Invitrogen™ SureCast™ Gel Handcast System**. The SureCast system is fully compatible with our Mini Gel Tank. Use Invitrogen™ SureCast™ handcasting reagents as well as other popular polyacrylamide gel casting reagents.

Features of the SureCast Gel Handcast System include:

- **Leak-free design**—gels that are more usable, for less wasted time
- **Superior glass plate durability**—up to 20 times more durable compared to other suppliers' plates
- **Unique tilt feature**—helps minimize spillage when pouring acrylamide solutions
- **Simple assembly of casting components**—uses a single-motion, load-and-lock mechanism

* Terms and conditions apply. For complete details, go to thermofisher.com/surecastterms.

Welcome packs

SureCast Gel Handcast Bundle A



The Invitrogen™ SureCast™ Gel Handcast Bundle A includes all the hardware and reagents to get started:

2 SureCast Gel Handcast Stations
2 SureCast Glass Plate Sets (2 front, 2 back)
2 SureCast Sealing Pads (attached to handcast stations)
10 SureCast Gel Spacers
1 10-Well Multi-Use Tool
1 12-Well Multi-Use Tool
1 15-Well Multi-Use Tool
6 Gel Combs (2 each: 10-, 12-, 15-well)
1 SureCast Stacking Buffer 2-pack
1 SureCast Resolving Buffer 2-pack
1 SureCast APS (25 g)
1 SureCast TEMED (30 mL)
1 SureCast Acrylamide Solution, 40% (450 mL)

SureCast Gel Handcast Bundle B



The Invitrogen™ SureCast™ Gel Handcast Bundle B includes all the hardware to get started:

2 SureCast Gel Handcast Stations
2 SureCast Glass Plate Sets (2 front, 2 back)
2 SureCast Sealing Pads (attached to handcast stations)
10 SureCast Gel Spacers
1 10-Well Multi-Use Tool
1 12-Well Multi-Use Tool
1 15-Well Multi-Use Tool
6 Gel Combs (2 each: 10-, 12-, 15-well)

Find out more at thermofisher.com/surecast

Description of parts

Introduction

The parts of the SureCast™ Handcast System are described in the following section. See page 14 for ordering information.

SureCast™ Handcast Station

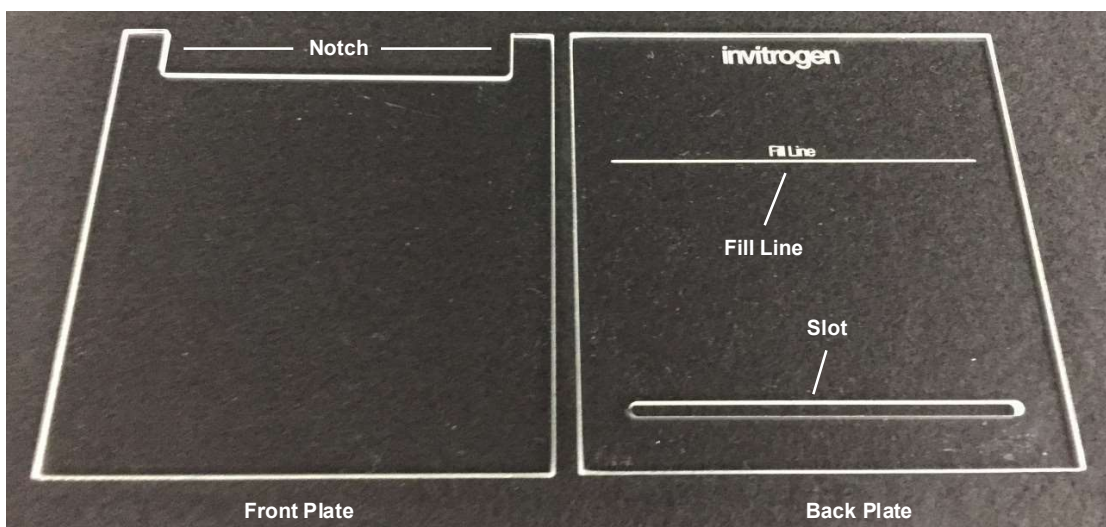
The SureCast™ Handcast Station consists of a plastic base in which glass plates and a gel spacer are held in position with a cam plate to allow casting of polyacrylamide gels.



SureCast™ Glass Plates

SureCast™ Glass Plates consist of a front plate and a back plate. The front plate has a notch at the top of the plate for placement of the gel comb when casting gels.

The back plate has a slot at the bottom, and a printed fill line to indicate the level to which resolving gel solution is poured when casting gels. When assembled, the lettering on the back plate should be readable, indicating that the plate is in the correct orientation.



SureCast™ Sealing Pad

The SureCast™ Sealing Pad is attached to the cam plate, and ensures that the slot in the back plate is sealed against leakage when pouring the resolving gel. The pad also holds the glass plates firmly in place for casting.



SureCast™ Gel Spacer

The SureCast™ Gel Spacer is a 1 mm thick silicone spacer that is placed between front and back SureCast™ Glass Plates when casting gels. The spacer is matched with the SureCast™ gel combs to cast 1 mm thick gels.



SureCast™ Gel Combs

The SureCast™ Gel Combs are plastic combs with 1 mm thick teeth, used to cast 10-well, 12-well, and 15-well gels.



SureCast™ Multi-use Tool

The SureCast™ Multi-use Tool can be used for several purposes:

- Gel loading guide for 10-well, 12-well, or 15-well gels
- Gel cassette opening tool
- Gel cutting tool
- Gel spatula



Reagents

The SureCast™ solution are provided to pour high quality gels, and can be stored at room temperature.

- SureCast™ Resolving Buffer
- SureCast™ Stacking Buffer
- SureCast™ Acrylamide Solution – 40%
- SureCast™ APS
- SureCast™ TEMED

Product specifications

SureCast™ Handcast Station specifications

Dimensions:	10 × 10 × 10 cm
Material:	Plastic
Glass Plate Size:	10 cm × 10.5 cm

The SureCast™ Handcast Station is compatible with alcohols, but not compatible with chlorinated hydrocarbons (e.g., chloroform), aromatic hydrocarbons (e.g., toluene, benzene) or acetone.

Gel selection

General guidelines

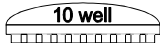
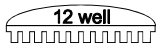

Choose the polyacrylamide percentage and type of well for your application based upon the expected molecular weight of your protein of interest and the volume of your sample.

Resolve large molecules with low percentage gels and small molecules with high percentage gels. If the molecular weight of the molecule is unknown, or the sample contains a wide range of molecules, use a mid-range percentage gel.

Recommended loading volumes

The maximum recommended loading volumes and protein load per band are provided in the table below.

Note: To ensure the highest band resolution, do not exceed the maximum load volume.

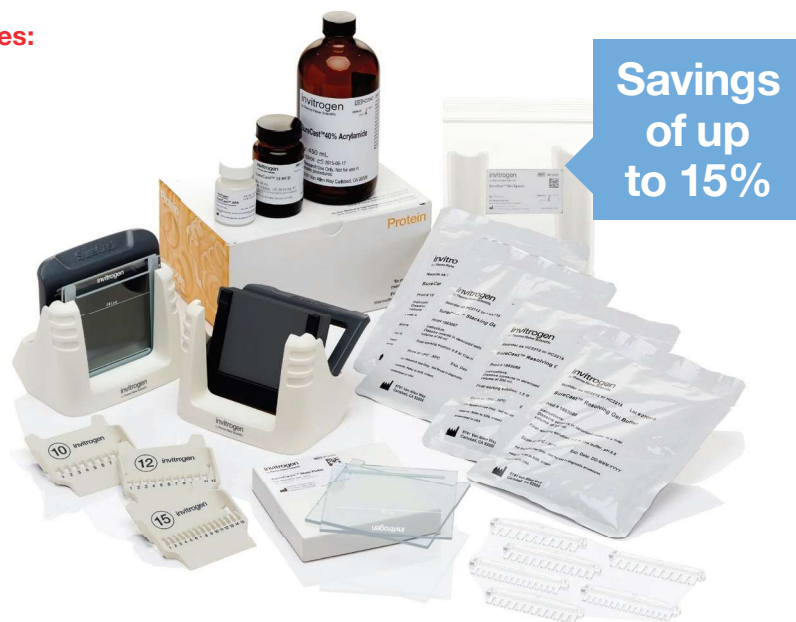
Well Types	Gel Thickness	Maximum Recommended Volume	Maximum Protein Load Per Band*
 10 well	1.0 mm	25 µL	0.5 µg/band
 12 well	1.0 mm	20 µL	0.5 µg/band
 15 well	1.0 mm	15 µL	0.5 µg/band

* Protein load values are for purified proteins that are western blotted subsequent to electrophoresis. For direct Coomassie staining (e.g. SimplyBlue™ Safestain), protein loads should be increased 10-fold.

Get started now with everything you need

Invitrogen™ SureCast™ Gel Handcast Bundle A includes:

- 2 SureCast Gel Handcast Stations
- 2 SureCast Glass Plate Sets (2 front and 2 back)
- 2 SureCast Sealing Pads (attached to handcast stations)
- 10 SureCast Gel Spacers
- 3 Multi-Use Tools (1 each: 10-, 12-, and 15-well)
- 6 Gel Combs (2 each: 10-, 12-, and 15-well)
- 1 SureCast Stacking Buffer 2-pack
- 1 SureCast Resolving Buffer 2-pack
- 1 SureCast APS (25 g)
- 1 SureCast TEMED (30 mL)
- 1 SureCast Acrylamide Solution, 40% (450 mL)



Invitrogen™ SureCast™ Gel Handcast Bundle B includes:

- 2 SureCast Gel Handcast Stations
- 2 SureCast Glass Plate Sets (2 front and 2 back)
- 2 SureCast Sealing Pads (attached to handcast stations)
- 10 SureCast Gel Spacers
- 3 Multi-Use Tools (1 each: 10-, 12-, and 15-well)
- 6 Gel Combs (2 each: 10-, 12-, and 15-well)



Ordering information

Product	Quantity	Cat. no.
Welcome packs		
SureCast Gel Handcast Bundle A	Multiple	HC1000SR
SureCast Gel Handcast Bundle B	Multiple	HC1000S
SureCast Gel Handcast System		
SureCast Gel Handcast Station	1 casting station	HC1000
SureCast Glass Plates	2 glass plate sets (2 front and 2 back)	HC1001
SureCast Sealing Pads	2 sealing pads	HC1002
SureCast 10-well Multi-Use Tool	1 multi-use tool	HC1010
SureCast 12-well Multi-Use Tool	1 multi-use tool	HC1012
SureCast 15-well Multi-Use Tool	1 multi-use tool	HC1015
SureCast Gel Spacer	10 spacers	HC1003
SureCast Gel Handcast Reagents		
SureCast Stacking Buffer (1 L), 2-pack	2 x 500 mL dry packs	HC2112
SureCast Stacking Buffer (2.5 L), 5-pack	5 x 500 mL dry packs	HC2115
SureCast Resolving Buffer (1 L), 2-pack	2 x 500 mL dry packs	HC2212
SureCast Resolving Buffer (2.5 L), 5-pack	5 x 500 mL dry packs	HC2215
SureCast APS	25 g	HC2005
SureCast Acrylamide Solution, 40%	450 mL	HC2040
SureCast TEMED	30 mL	HC2006

Find out more at thermofisher.com/surecast

ThermoFisher
S C I E N T I F I C