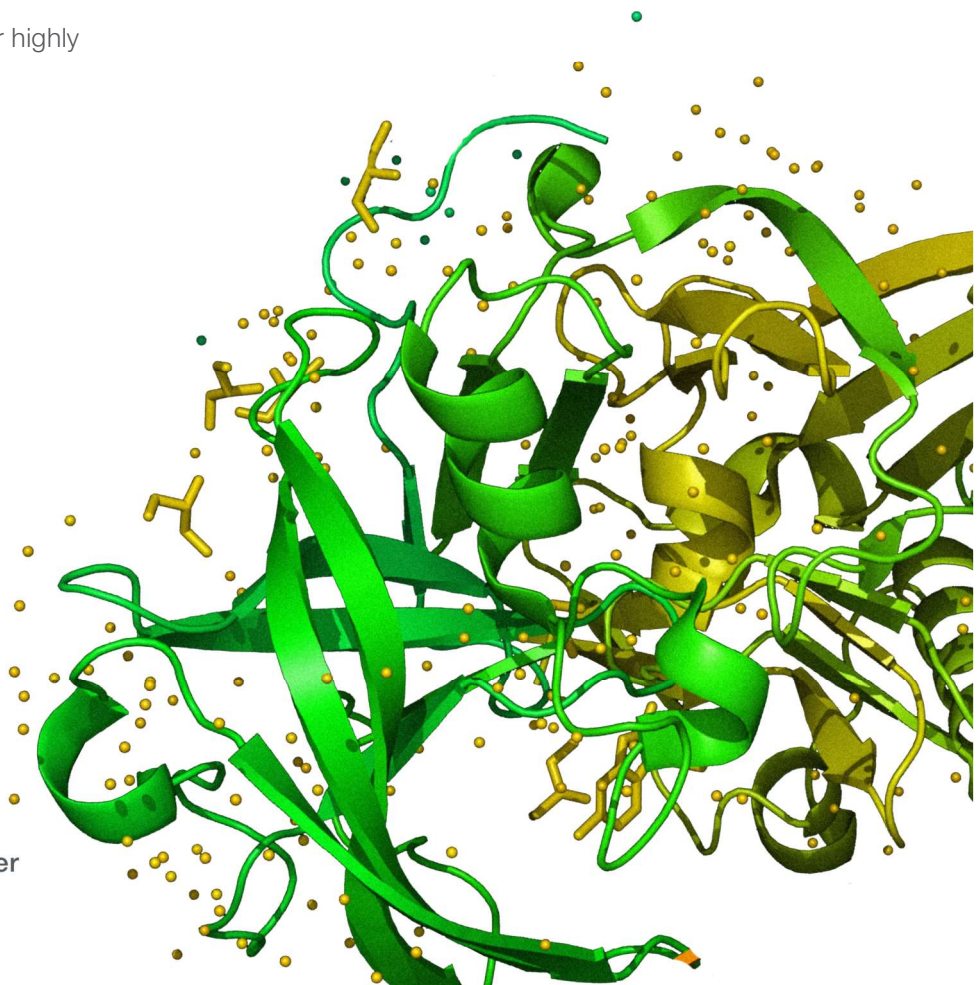


Convenient, reliable western wet transfer

Two Mini Blot Modules fit into the Mini Gel Tank and are designed to make your western transfers simple and easy to perform.

- **Universal module design**—allows modules to fit in either chamber of the tank, simplifying the transfer setup
- **Unique gasket seal**—helps prevent buffer leakage so there is no mess during setup of your western transfer
- **Half-inch buffer chamber**—requires half the typical volume of methanol-based transfer buffers (220 mL per blot)
- **Standard 60 min transfer protocol**—accelerates your western workflow so you can get results faster
- **Robust electrodes, sturdy steel plates**—for highly efficient and reliable western transfers



Find out more at thermofisher.com/wettransfer

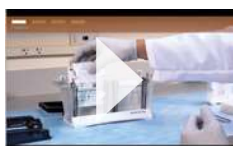
Mini Blot Module

Leak-free, less-buffer wet transfer system

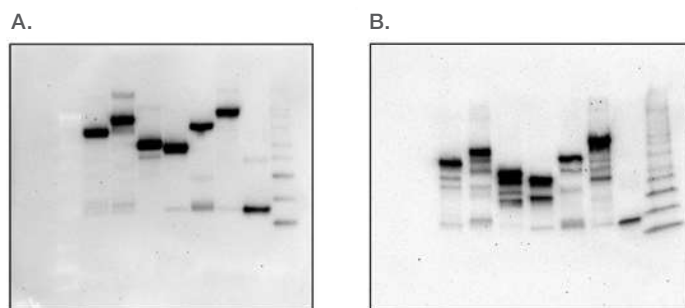
The Invitrogen™ Mini Blot Module is a wet transfer device used exclusively with the Invitrogen™ Mini Gel Tank and is designed to make your Western transfers simple and easy-to-perform. The tank accommodates one Mini Blot Module per chamber, or two blot modules total with the side-by-side layout. The universal connection and molded gasket make the blot module easy-to-use, while the inner core of the blot module allows for use of less methanol-based transfer buffer per wet transfer than other commercially available transfer systems. At the recommended conditions and constant voltage, proteins can be transferred to nitrocellulose or PVDF membranes typically in 30 to 60 minutes.

Features:

- **Universal module design** — allows modules to fit in either chamber of the tank, simplifying the transfer setup
- **Unique gasket seal** — helps prevent buffer leakage to minimize mess during setup of your Western transfer
- **1/2-inch buffer chamber** — requires only half the volume of methanol-based transfer buffer and helps save you money
- **Standard 60-minute transfer protocol** — accelerates your Western workflow so you can get results faster
- **Robust electrodes, sturdy steel plates** — for highly efficient and reliable Western transfers



► Learn more at thermofisher.com/wettransfer



A Western blot of a Bolt gel shows clean, sharp protein signals corresponding to only full-length proteins, whereas a Western blot of a Bio-Rad™ TGX™ gel shows multiple low molecular weight degradation products. Protein kinases implicated in cancer (IKKB, HCK, EPHB3, MAPK14, FLT1, and DDR2) were analyzed on **(A)** a Bolt Bis-Tris Plus gel and **(B)** a Bio-Rad TGX Tris-glycine gel. Protein samples were prepared for electrophoresis according to each manufacturer's protocol. The purified kinases (50ng each) as GST fusion proteins, along with MagicMark XP Protein Standard and purified recombinant GST, were loaded in a Bolt 4–12% gel and a Bio-Rad TGX 4–20% gel. The samples were separated and transferred to PVDF membranes using the Mini Blot Module for the Bolt gels or on the Bio-Rad transfer system. Blot detection was performed using an anti-GST antibody and a WesternBreeze Chemiluminescence Detection Kit. The membranes were then imaged using an LAS-1000 system (FujiFilm) with an exposure time of one minute.

Specifications

Mode of Transfer	Wet
Gel Compatibility	NuPAGE Bis-Tris, Tris-acetate, Tris-glycine, Tricine, Bolt Bis-Tris Plus gels
Running Dimension	Vertical
Capacity	≤2 blot modules/mini-gel tank; 1 mini gel/blot module
Gel Size	Mini (8 x 8cm)

Recommended Products

Our Invitrogen™ PowerEase™ 300W Power Supply, Nitrocellulose Pre-cut Blotting Membranes and Pre-cut PVDF Membranes are recommended for use with the Mini Blot Module.

Ordering information

Separate	Quantity	Cat. No.
SureCast Gel Handcast Bundle A - Hardware and Reagents	1 kit	HC1000SR
SureCast Gel Handcast Bundle B - Hardware Only	1 kit	HC1000S
Bolt Bis-Tris 4–12%, 10-well Welcome Pack	1 kit	NW0412A
Bolt Bis-Tris 4–12%, 15-well Welcome Pack	1 kit	NW0412B
NuPAGE Bis-Tris 4–12%, 10-well Welcome Pack	1 kit	NP032A
NuPAGE Bis-Tris 10%, 10-well Welcome Pack	1 kit	NP030A
NuPAGE Tris-Acetate 3–8%, 10-well Welcome Pack	1 kit	EA0375A
Novex Tris-Glycine 10%, 10-well Welcome Pack	1 kit	XP0010A
Novex Tris-Glycine 4–12%, 10-well Welcome Pack	1 kit	XP0412A
Novex Tris-Glycine 10%, 15-well Welcome Pack	1 kit	XP0010C
Novex Tris-Glycine 4–12%, 15-well Welcome Pack	1 kit	XP0412C
Transfer	Quantity	Cat. No.
Mini Blot Module	1 unit	B1000
Detect	Quantity	Cat. No.
StartingBlock (TBS) Blocking Buffer	1 L	37542
StartingBlock T20 (TBS) Blocking Buffer	1 L	37543
StartingBlock (PBS) Blocking Buffer	1 L	37538
StartingBlock T20 (PBS) Blocking Buffer	1 L	37539
Blocker FL Fluorescent Blocking Buffer (10X)	100 mL	37565
Pierce Clear Milk Blocking Buffer (10X)	100 mL	37587
Blocker BSA (10X) in TBS	125 mL	37520
Blocker BSA (10X) in PBS	125 mL	37525
Pierce Protein-Free (TBS) Blocking Buffer	1 L	37570
Pierce Protein-Free T20 (TBS) Blocking Buffer	1 L	37571
Pierce Protein-Free (PBS) Blocking Buffer	1 L	37572
Pierce Protein-Free T20 (PBS) Blocking Buffer	1 L	37573
Pierce ECL Western Blotting Substrate	250 mL	32209
Pierce ECL Plus Western Blotting Substrate	100 mL	32132
SuperSignal West Pico PLUS Chemiluminescent Substrate	200 mL	34577
SuperSignal West Dura Extended Duration Substrate	100 mL	34075
SuperSignal West Femto Maximum Sensitivity Substrate	100 mL	34095
SuperSignal West Atto Ultimate Sensitivity Substrate	100 mL	A38555